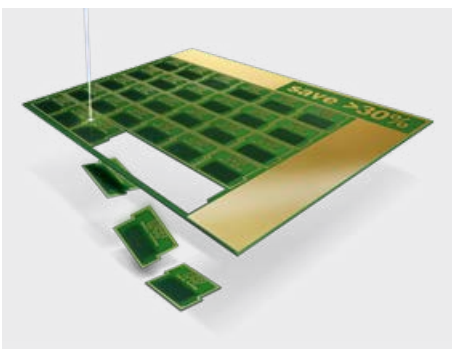
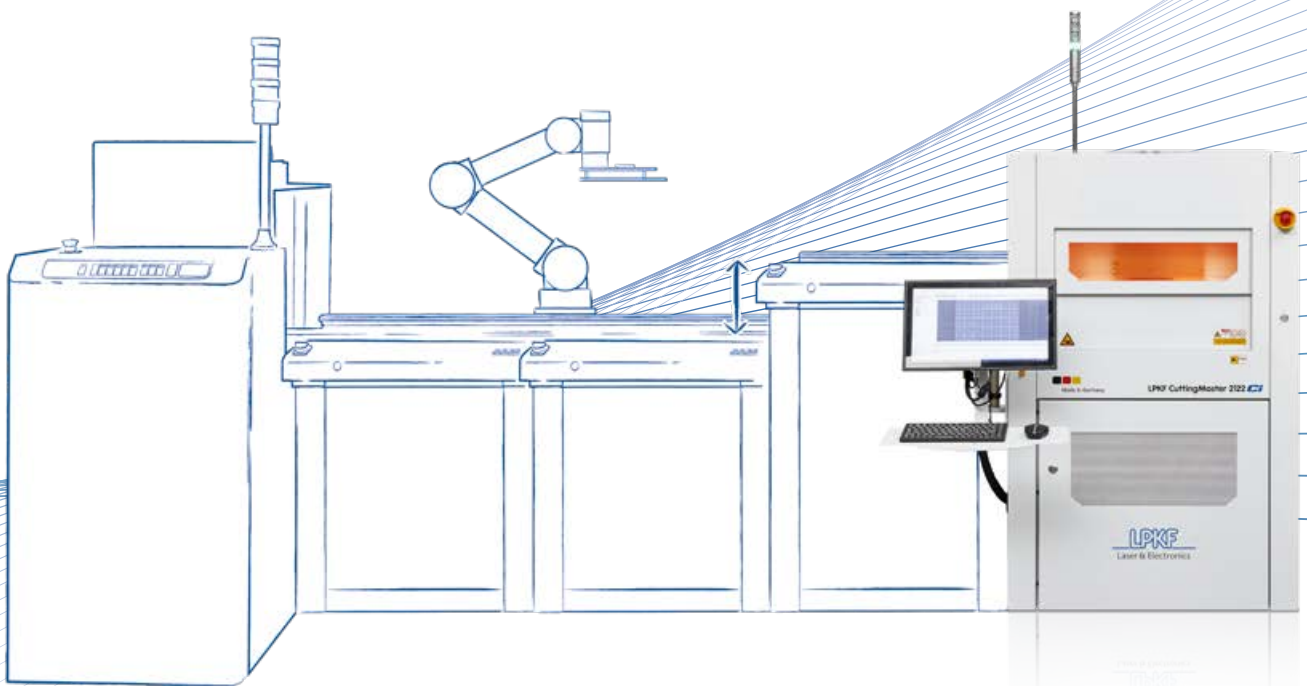


Taking Depaneling to the Next Level

Automation Solutions by LPKF

- Maximum performance and reliability
- Optimum cost efficiency
- Custom scalability
- Tailor-made solutions



Scalable Automation Solutions for the Smart Manufacturing of the Future

The depaneling systems from the LPKF CuttingMaster 2000 and 3000 platform can be expanded by adding flexible, customized handling modules. This improves the effectiveness and efficiency of PCB production and offers some cost benefits.

Level of Automation can be Scaled up Retrospectively

New systems can be equipped directly with customized automation solutions. Existing systems that have previously been loaded manually can be automated retrospectively and easily integrated into a production line or stand-alone solution. External automation modules for loading and unloading the system can be added successively.

The systems communicate simply with one another via integrated SMEMA interfaces. The depanelers can also be connected to an existing MES system via a standardized OPC UA interface.

Optimum Cost Structure

Automated handling speeds up the manufacturing process and avoids loading errors. Thanks to the structure, which was specifically designed for depaneling, and the cross-platform use of identical parts, LPKF guarantees an excellent cost-benefit ratio for the system. In addition, compact designs and minimal footprints ensure efficient use of the space available.

Customized Solutions

Flexible cobot systems or high-performance linear axis systems meet the most stringent quality standards. Universal or application-specific carrier and gripper solutions simplify adaptation to the specific product mix and allow a high degree of variability for a wide range of product variants.

